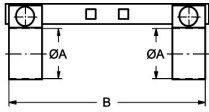


Tube couplings for bulk materials

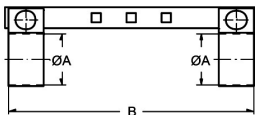
Art.No EUR Art.No EUR

Safety tube clamp for RKS 100

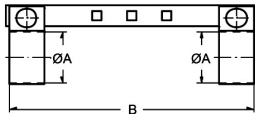


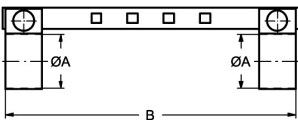
DN	A	B				AISI304 / Alu		Steel zinc plated / Alu	
38	38	300				571602	22,30	571502	12,50
39	39	300				571603	22,30	571503	12,50
45	45	300				571607	22,30	571507	12,50
50	50	300				571609	22,30	571509	12,50
55	55	300				571612	22,30	571512	12,50
60	60	300				571615	22,30	571515	12,50
63	63	300				571616	22,30	571516	12,50
65	65	300				571617	22,30	571517	12,50
70	70	300				571620	22,30	571520	12,50
75	75	300				571623	24,40	571523	13,80
80	80	300				571625	24,40	571525	13,80

Safety tube clamp for RKS 150



DN	A	B				AISI304 / Alu		Steel zinc plated / Alu	
38	38	350				571802	22,30	571702	12,50
39	39	350				571803	22,30	571703	12,50
45	45	350				571807	22,30	571707	12,50
50	50	350				571809	22,30	571709	12,50
55	55	350				571812	22,30	571712	12,50
60	60	350				571815	22,30	571715	12,50
63	63	350				571816	22,30	571716	12,50
65	65	350				571817	22,30	571717	12,50
70	70	350				571820	22,30	571720	12,50
75	75	350				571823	24,40	571723	13,80
80	80	350				571825	24,40	571725	13,80
83	83	350				571826	24,40	571726	13,80
85	85	350				571828	24,40	571728	13,80
89	89	350				571830	24,40	571730	13,80
95	95	350				571832	27,60	571732	16,10
100	100	350				571833	27,60	571733	16,10
102	102	350				571834	27,60	571734	16,10
105	105	350				571836	27,60	571736	16,10
108	108	350				571838	27,60	571738	16,10
110	110	350				571839	27,60	571739	16,10
115	115	350				571841	28,50	571741	17,80
120	120	350				571842	28,50	571742	17,80
125	125	350				571843	28,50	571743	17,80
127	127	350				571844	28,50	571744	17,80
129	129	350				571845	30,40	571745	17,80
133	133	350				571847	30,40	571747	17,80
135	135	350				571848	30,40	571748	17,80
140	140	350				571849	30,40	571749	17,80
146	146	350				571853	32,80	571753	19,10

Tube couplings for bulk materials						Art.No	EUR	Art.No	EUR
Safety tube clamp for RKS 150 	DN	A	B			AISI304 / Alu		Steel zinc plated / Alu	
	150	150	350			571854	32,80	571754	19,10
	152	152	350			571855	32,80	571755	19,10
	155	155	350			571857	32,80	571757	19,10
	159	159	350			571858	32,80	571758	19,10
	168	168	350			571860	32,80	571760	19,10
	174	174	350			571863	32,80	571763	19,10
	180	180	350			571866	37,60	571766	21,60
	191	191	350			571869	37,60	571769	21,60
	193	193	350			571870	37,60	571770	21,60
	200	200	350			571873	37,60	571773	21,60
	203	203	350			571874	37,60	571774	21,60
	210	210	350			571877	39,70	571777	23,00
	219	219	350			571878	39,70	571778	23,00
	230	230	350			571881	39,70	571781	23,00
	250	250	350			571884	39,70	571784	23,00
	260	260	350			571886	39,70	571786	23,00
	266	266	350			571887	39,70	571787	23,00
	273	273	350			571889	39,70	571789	23,00
	280	280	350			571890	39,70	571790	23,00

Safety tube clamp for RKS 200 	DN	A	B			AISI304 / Alu		Steel zinc plated / Alu	
	83	83	400			572626	25,20	571926	16,30
	85	85	400			572628	25,20	571928	16,30
	89	89	400			572630	25,20	571930	16,30
	95	95	400			572632	28,70	571932	19,10
	100	100	400			572633	28,70	571933	19,10
	102	102	400			572634	28,70	571934	19,10
	105	105	400			572636	28,70	571936	19,10
	108	108	400			572638	28,70	571938	19,10
	110	110	400			572639	28,70	571939	19,10
	115	115	400			572641	30,20	571941	20,30
	120	120	400			572642	30,20	571942	20,30
	125	125	400			572643	30,20	571943	20,30
	127	127	400			572644	30,20	571944	20,30
	129	129	400			572645	32,40	571945	20,30
	133	133	400			572647	32,40	571947	20,30
	135	135	400			572648	32,40	571948	20,30
	140	140	400			572649	32,40	571949	20,30
	146	146	400			572653	35,20	571953	24,20
	150	150	400			572654	35,20	571954	24,20
152	152	400			572655	35,20	571955	24,20	
155	155	400			572657	35,20	571957	24,20	